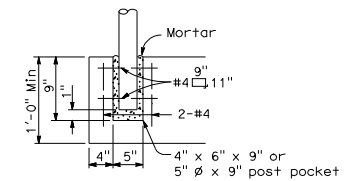
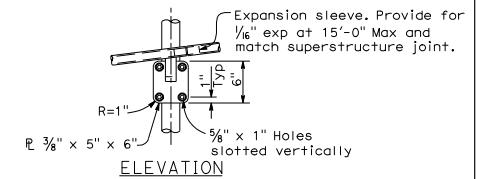
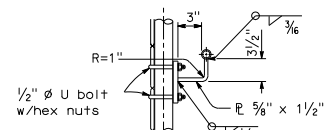
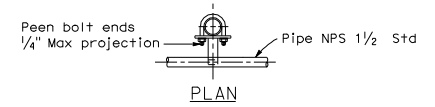
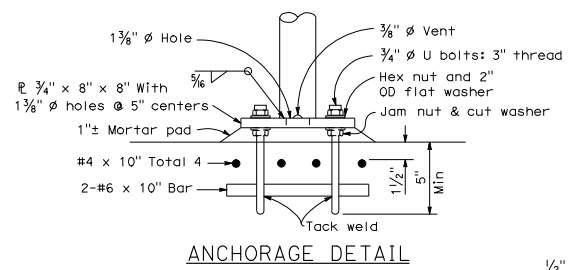
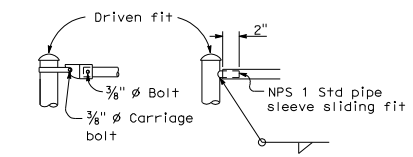
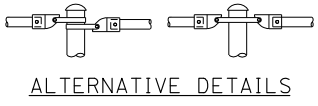
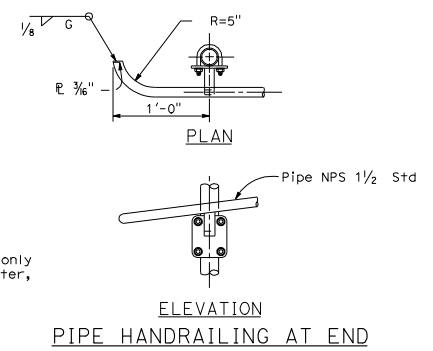


DIST	COUNTY	ROUTE	POST MILES TOTAL PROJECT	SHEET NO.	TOTAL SHEETS

REGISTERED CIVIL ENGINEER  
 May 1, 2006  
 PLANS APPROVAL DATE  
 The State of California or its officers or agents shall not be responsible for the accuracy or completeness of electronic copies of this plan sheet.  
 To get to the Caltrans web site, go to <http://www.dot.ca.gov>

REGISTERED PROFESSIONAL ENGINEER  
 Tiliat Satter  
 No. C42892  
 Exp. 03-31-08  
 CIVIL  
 STATE OF CALIFORNIA



- NOTES:
- Railing assembly except chain link fabric to be galvanized after fabrication.
  - Peen all bolt threads.
  - Railing shall conform to horizontal and vertical alignment. Posts shall be vertical. Top and bottom pipes shall be bent if radius is 148'-0" or less; may be on 8'-0" chords if radius is over 148'-0".
  - When railing is on slope, 6'-0" chain link fabric shall be placed parallel to slope.
  - Alternative details may be submitted by Contractor for Engineer's approval.
  - Additional pipe NPS 1/4 Std required when radius is less than 150'-0".

May be used when thickness of concrete is 1'-0" or more.

STATE OF CALIFORNIA  
 DEPARTMENT OF TRANSPORTATION  
**CHAIN LINK RAILING**  
 NO SCALE

**B11-7**

2006 STANDARD PLAN B11-7